



Grubišno Polje city belong to Bjelovarsko-bilogorska county and its area is the largest local government unit. County the position belongs to the continental region-green region -NUTS 2 levels.

Grubišno Polje city covers an area of 269 km², of that area forest land covers 11,986.62 hectares (45%) - oak, beech, hornbeam, which are majority owned by the Republic of Croatia. The cultivable area in Grubišno Polje city includes 8502.09 ha (32%). The city area covers 24 settlements with 6,478 residents.

Developed utility, road, postal and telecommunication infrastructures.

On the area of Grubišno Polje city, investigative activities related to the exploitation and storage of the hydrocarbons gas were completed, and was put into operation wastewater treatment plant 5500 equivalents.

Grubišno Polje area is rich in drinking water, which is exploited on 6 wells and drilled 4 wells are still not fully equipped. During this year it is a plan to complete equipping 2 wells, and we expect this to be in operation by end of the year.

Agriculture with the forestry and industry is economic base of the area, and in the City operates 1,068 family farms (farming, permanent crops, animal production, honey production, production in protected areas).

LOCAL INCETIVES (SUBVENTIONS) FOR INVESTITORS IN BUSINESS ZONE

- Investor in SME Zone will be exempt from payment of municipal contributions
- The city will assist businesses in planning their development, making their development projects and the organization of training entrepreneurs in the City and businesses primarily in SME Zone
- City, in cooperation with the secondary school will actively participate in the training of personnel and their retraining for the economy
- Price for each plot was formed in accordance with the Study on the assessed value of real estate. After payment of 5% of the purchase price with the customer to lock the preliminary agreements governing the right to build, and only when the investment (implementation of the business plan) investors pay the remaining amount of the purchase price and conclude a sales contract
- An investor upon completion of the investment is supported by the same of up to 95% of the purchase price of the land
- with every purchase of land investor receives part of engaged power electricity connections, 0.0025 kW/m² (3.38 kn/m²), to a maximum of 60 kW per plot
- **The low price of building land – upon fullfilment of contractual conditions is 0,27 €/m²**

GRAD GRUBIŠNO POLJE tel. +385 43/448-210
 Trg bana Josipa Jelačića 1 tel. +385 43/448-201
 43290 Grubišno Polje, CRO fax. +385 43/485-496

e-mail: grad-grubisno-polje@bj.t-com.hr
 e-mail: gospodarstvo1@grubisnopolje.hr
 www.grubisnopolje.hr

GRUBIŠNO POLJE CITY REGION OF CHALLENGES AND OPPORTUNITIES, DESIRABLE FOR ECONOMIC DEVELOPMENT, GROWTH AND ENTREPRENEURSHIP



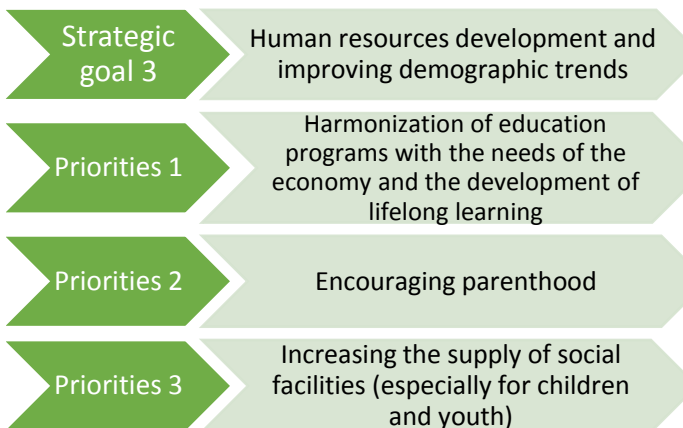
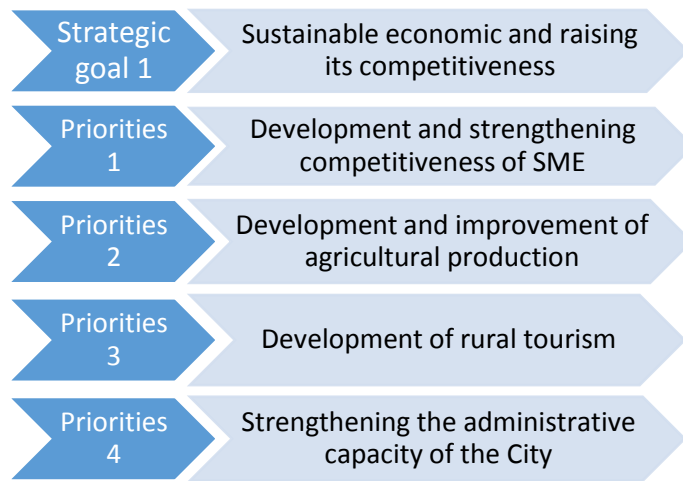
Grad Grubišno Polje



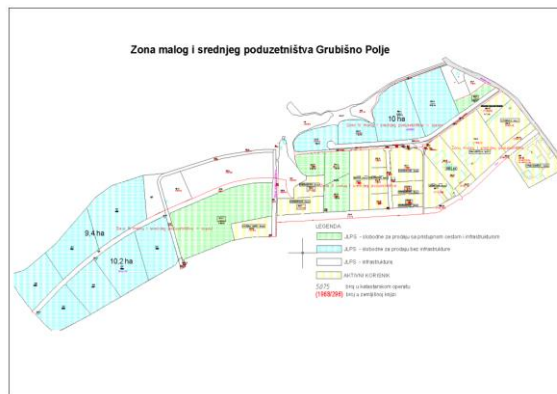
VISION

Grubišno Polje is a place of quality and comfortable living, sustainable economic development based on natural resources, tradition and valuable people. Place where the young people have the opportunity to realize their potential and aging population pleasant and healthy living.

STRATEGIC GOALS



City of Grubišno Polje its economic development based on entrepreneurship and enterprise zone, which was established in 2002, after which was expanded in two turns, back then on Zone II of SME and Zone III of SME. Further, all three business Zones are mutually connected and make one complex and the same were connected in one Small and medium enterprises business Zone Grubišno Polje in 2017 with surface of 72 ha.

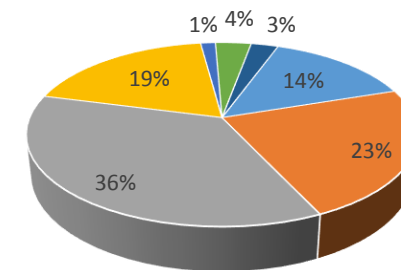


Entrepreneurs operating in the SME Zone:

1. Primatehničar d.o.o.-metal production,
2. Zagrebpetrol d.o.o.-waste management,
3. Ceste d.o.o.-asphalt plant,
4. Energopelet d.o.o.-firewood,
5. Komunalac d.o.o.-utility services,
6. Vodovod d.o.o.-waterworks and sewage,
7. Energostatik d.o.o.-electricity production,
8. Biokor d.o.o.- electricity production,
9. Royal – deals with shaping of stone,
10. Energija invest d.o.o. – electricity production

14 lots are free – totally in surface 400.000 m²

On area of Grubišno Polje city is recorded 555 unemployed persons, by the level of their education:



- Without finished school and elementary school
- Elementary school
- High School for the profession to 3y, and schools for skilled and highly skilled workers
- High School for the profession to 4 years and more
- Gymnasium
- College, 1st degree of college and professional study
- Faculty, Academy, Master, Doctorate

<ul style="list-style-type: none"> - Available significant natural resources that can be placed in economic function - Developed business / entrepreneurial infrastructure - Growing specialization in agricultural activities - The existence of the tradition of agricultural production and processing industry 	<ul style="list-style-type: none"> - Poorly developed entrepreneurship and crafts - Retention of the traditional agricultural production - Bad connections with agricultural producers - Unresolved property-legal relations and unadjusted data in the land registry - Fragmentation of agricultural land - Departure of young and educated people from City area - Insufficient use of renewable energy sources
<ul style="list-style-type: none"> - Use of incentive and/or non-refundable funds from Croatia and EU for SMEs financing - Connecting small and medium enterprises in mini clusters - National programs to encourage the development and increase the competitiveness of SMEs - National programs to encourage new investors - Access to the EU open market of 500 million. Residents 	<ul style="list-style-type: none"> - The continuation of the economic recession in Croatia which has been going on for years - Accession to the EU increased risk of competition - Restrictions on the production and export of which are accepted by joining the EU - Frequent changes in laws and procedures that create distrust in all markets - Rapid development and implementation of new technologies