

# GRUBIŠNO POLJE CITY INVESTMENT POTENTIALS





# Bjelovar - bilogora region

## Green County – NUTS 2 level

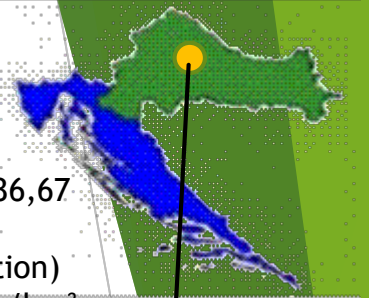
Bjelovar - bilogora region:

Total area of the Bjelovar-bilogora region is 2.636,67 km<sup>2</sup> (4,7% of total country area)

133.084 inhabitants (3% of total country population)

The average population density is 50 inhabitants/km<sup>2</sup> in 5 cities and 18 municipalities

Natural resources: available agricultural land (51,2% of total surface) and forests (36,2% of total surface)



## Local Action Group Bilogora-Papuk

The average population density in the area of LAG Bilogora-Papuk is 39,18 inhabitants/km<sup>2</sup> (24,89% of total population of Bjelovar-bilogora county).

LAG Bilogora-Papuk covers an area of 31,9% of Bjelovar-bilogora county and includes area of the towns Grubišno Polje and Daruvar and municipalities Đulovac, Končanica, Sirač and Dežanovac



# Grubišno Polje city



It covers over 269 km<sup>2</sup>, with 24 settlements and 6,478 residents

Natural resources: available agricultural land with 8,502.09 ha and forest with 11,986.62 ha

Developed utility, road and telecommunication infrastructure

Indicators of development for the City of Grubišno Polje:

## Population by main source of livelihood, the list for 2011.

Permanent work income – 1.500	Agriculture income– 1.166	Other pensions – 988	Social benefits – 646	Periodical support from others – 83
Occasional work income- 219	Old-age pension - 792	Property income – 34	Other income - 108	Without income – 1.926

## Craftsmen which operate in Grubišno Polje area

Activities	Number of craftsmen
Trade	14
Service activities	31
Construction	3
Wood industry	1
Transport	1
Agriculture	19
Food industry	3
Other	7

## Company financial data in Grubišno Polje city

Number of entrepreneurs	Number of employees	Total income	Total outcome	Period profit	Period loss	Net profit
79	527	343.176	337.135	10.723	7.403	3.320

Source: FINA

The area of Grubišno Polje, has a plenty of natural resources, available agricultural land (8,502.09 ha) and forest (11,986.62 ha), which along with the tradition of agricultural production can provide the necessary raw materials for processing Industry (for example the food industry "Zdenka - dairy products" Ltd. , wood processing "Twin" Ltd., and others) which operating in the City of Grubišno Polje, and there are opportunities for further development of the processing industry based on investment in agriculture



Agriculture, along with forestry and industry, is the economic base of this region, and it occupies 26.46% of the population with the continuously improvement in agricultural activities





STRATEGIC  
GOALS OF  
GRUBIŠNO  
POLJE  
CITY

1st STRATEGIC GOAL  
Sustainable  
development of the  
economy, and raising  
its competitiveness

1<sup>st</sup> Priority  
SME development and competitiveness strengthening

2<sup>nd</sup> Priority  
Development and improvement of agricultural  
production

3<sup>rd</sup> Priority  
Rural tourism development

4<sup>rd</sup> Priority  
Strengthening the administrative capacity of the City

2nd STRATEGIC GOAL  
Improvement of  
social and utility  
infrastructure, and  
improving life quality

1<sup>st</sup> Priority  
Social infrastructure improvement

2<sup>nd</sup> Priority  
Improving of utilities, energy and transport  
infrastructure

3<sup>rd</sup> Priority  
Environmental protection, sustainable management  
of waste, natural resources and energy

3rd STRATEGIC GOAL  
Human resources  
development and  
demographic trends  
improving

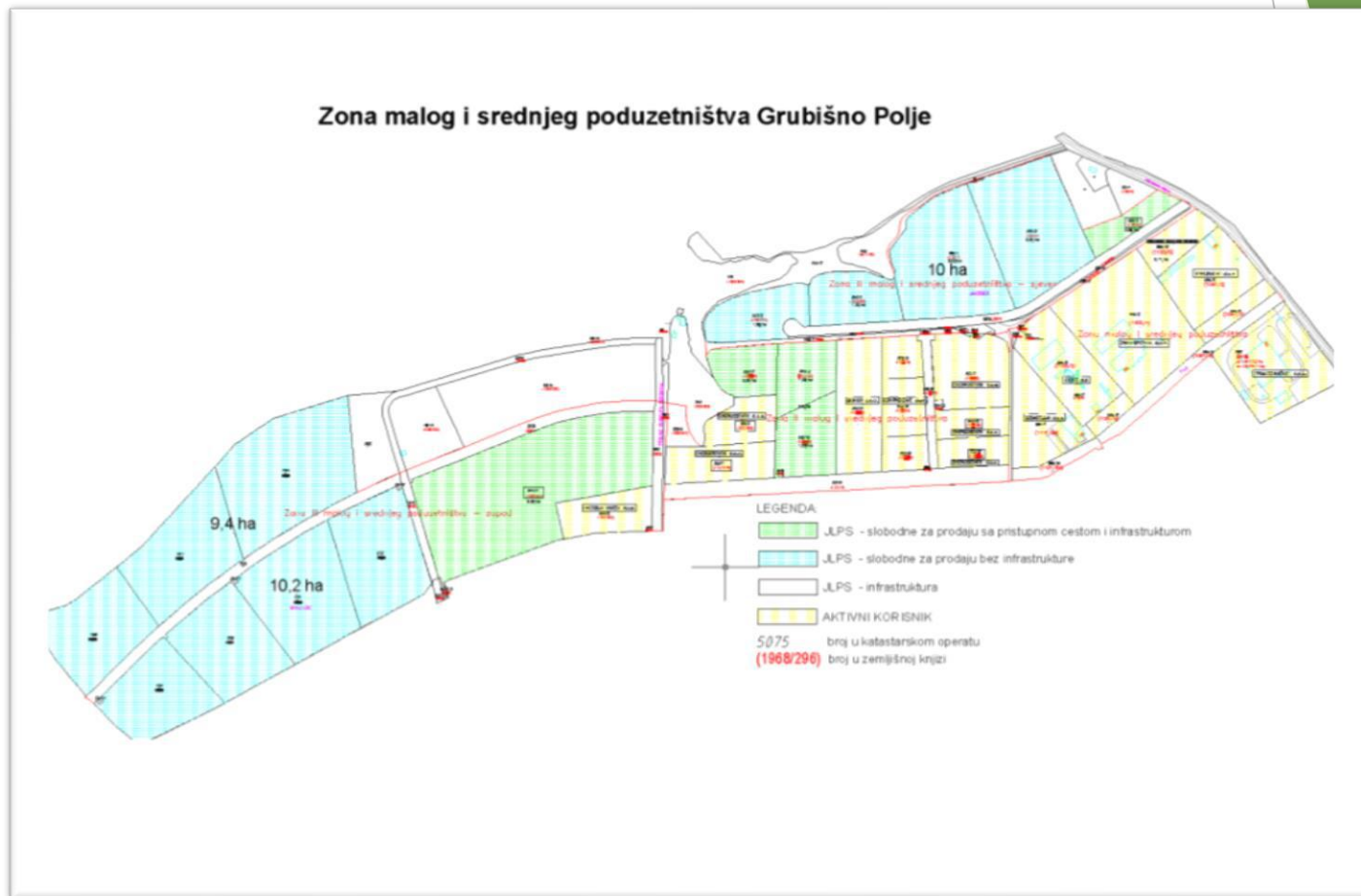
1<sup>st</sup> Priority  
Harmonization of educational programs with the  
needs of the economy and the development of  
lifelong learning

2<sup>nd</sup> Priority  
Encouraging parenthood

3<sup>rd</sup> Priority  
Increasing the supply of social facilities (especially  
for children and young)

# Small and medium enterprises business zone Grubišno Polje

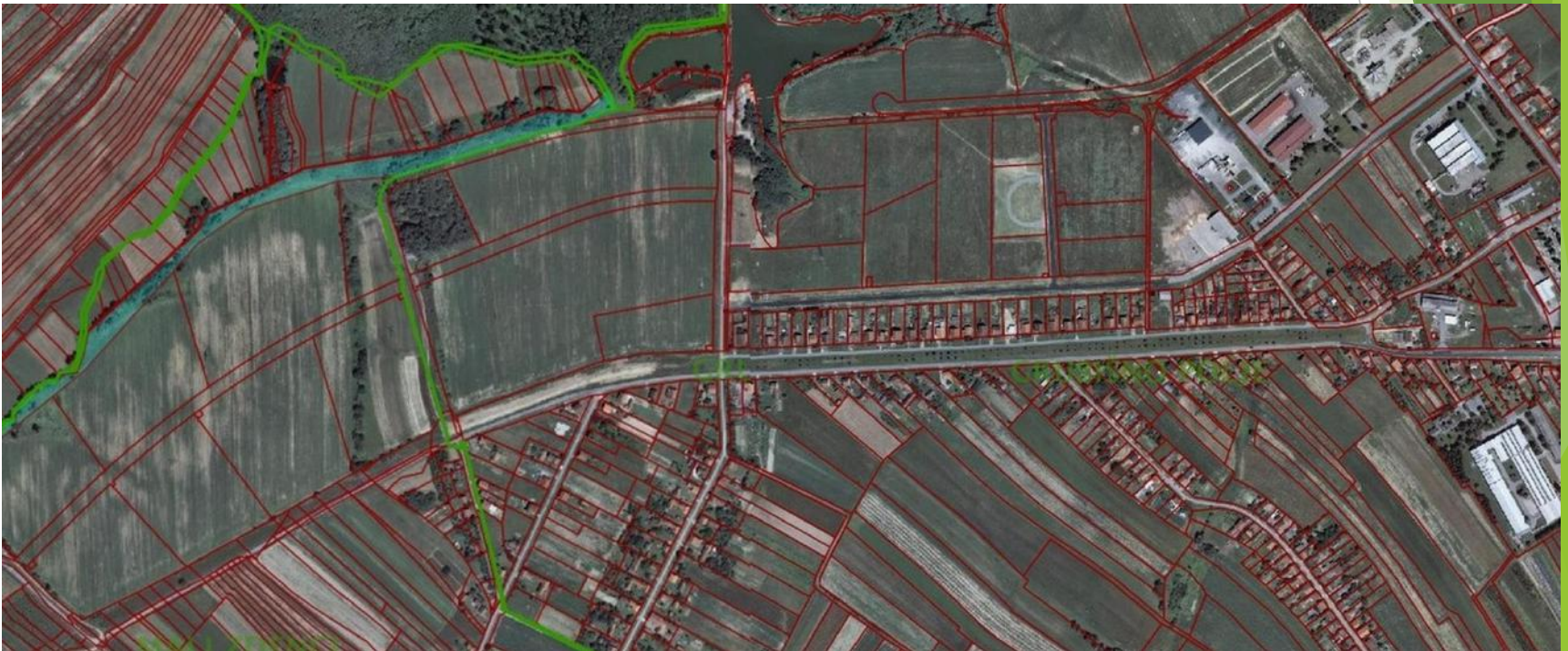
- Economic development of Grubišno Polje city is based on entrepreneurship and enterprise SME zone,
- It was established in 2002, after which was expanded in two turns, back then on SME Zone II and SME Zone III. Further, all three business Zones are mutually connected and make one complex and the same were connected in one Small and medium enterprises business Zone Grubišno Polje in 2017 with surface of 72 ha.



SME business zone Grubišno Polje

# Entrepreneurs operating in the zones:

- ▶ 1. Primatehničar d.o.o.-metal production,
  - ▶ 2. Zagrebpetrol d.o.o.-waste management,
  - ▶ 3. Ceste d.o.o.-asphalt plant,
  - ▶ 4. Energopelet d.o.o.-firewood,
  - ▶ 5. Komunalac d.o.o.-utility services,
  - ▶ 6. Vodovod d.o.o.-waterworks and sewage
  - ▶ 7. Energostatik d.o.o.-electricity production,
  - ▶ 8. Biokor d.o.o.-electricity production ,
  - ▶ 9. Royal - deals with shaping of stone,
  - ▶ 10.Energija invest d.o.o.-electricity production,
- ▶ **14 lots are free - totally in surface 400.000 m<sup>2</sup>**



# Incentive programs for investors in business zone:

## Local incentives:

### Municipal contribution

- 100% exempt from payment of municipal contributions

### Department for Local Economy Development

- Permanent help of city employees in the preparation of development projects and educating entrepreneurs

### Educational institutions cooperation

- The city actively participate in training of personnel and their retraining for economic trades in cooperation with the “Bartol Kašič” high school

### Completion of the investment support

- Investor gets support for the investment by City of Grubišno Polje in the amount of 95% of the purchase price of the land

### Input power

- With every purchase of land, investors receive part of engaged electricity connections, 0.0025 Kw/m<sup>2</sup>, or (3,38 kn/m<sup>2</sup>), to a maximum of 60 Kw per lot (or in equivalent of 81.000,00 kn)

### Other benefits

- City of Grubišno Polje is in area of special State concern of II. group where investors obtain benefits in accordance with the Special State concern law

In addition of local benefits, investors also have the ability of using national benefits



# Department for Local Economy development

- ▶ The main goal for the department is to provide requirement for local and economic development through small and medium enterprises, crafts, agriculture, forestry, trade, tourism and hospitality, and actively participate in strategic planning
- ▶ Economy department presents center of information for entrepreneurs and for those who just decided to implement business ideas
- ▶ Measures and programs to encourage entrepreneurship and the economy is the way which intense to increase the number of entrepreneurs beginners, while the ultimate goal is filling SME business zone of Grubišno Polje with new, innovative, economically sustainable and environmentally friendly business activities
- ▶ Cooperating with the higher institutions (Region, Ministry, Funds etc.) improves the speed of informing entrepreneurs such as higher institutions

# THANK YOU FOR THE ATTENTION



## Grubišno Polje city

Trg bana Josipa Jelačića 1  
43290 Grubišno Polje

Croatia

Central: +385 043 448 200

Fax: 043 485 496

E-mail: [gospodarstvo1@grubisnopolje.hr](mailto:gospodarstvo1@grubisnopolje.hr)

[www.grubisnopolje.hr](http://www.grubisnopolje.hr)